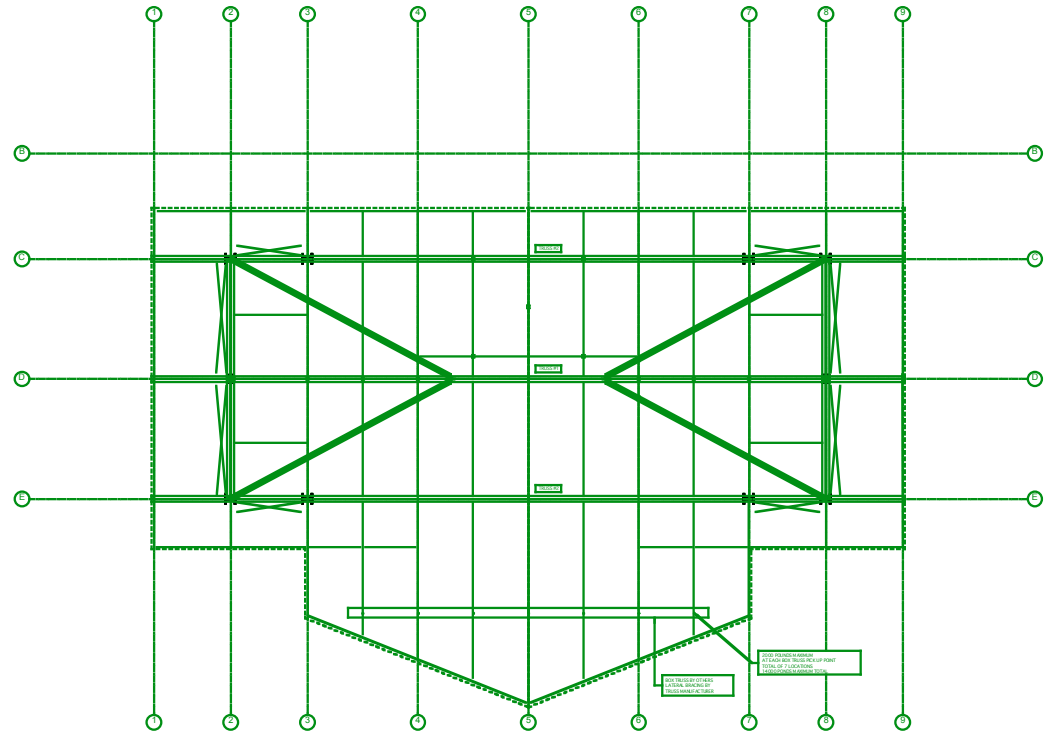
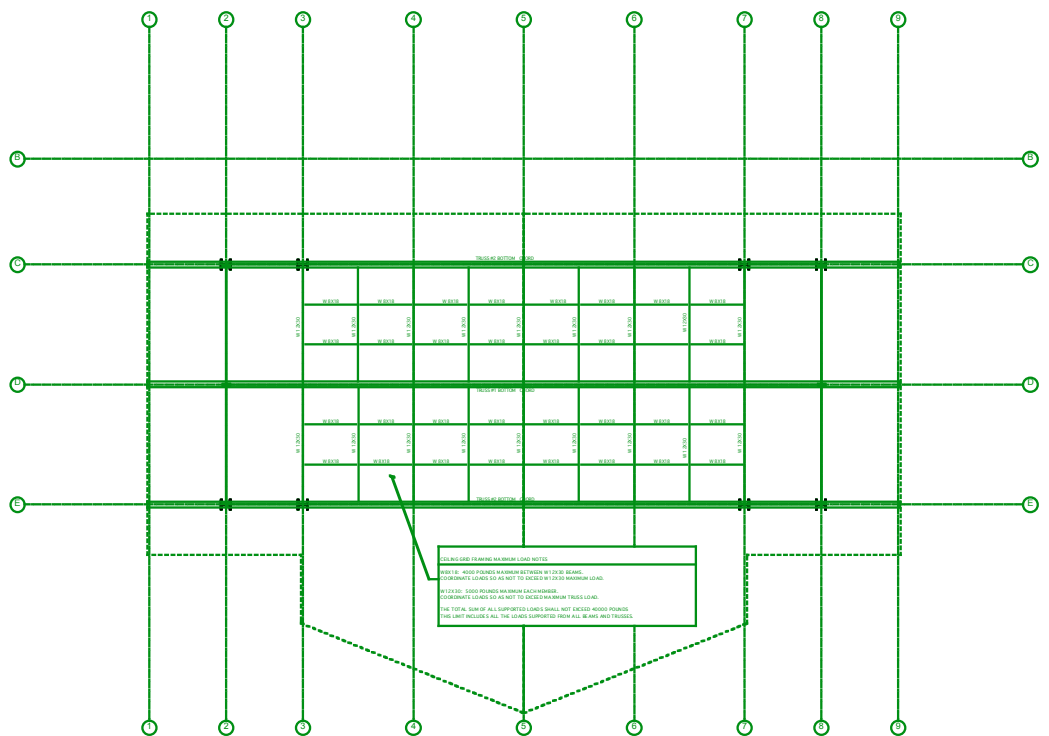


TRUSS RIGGING LOAD NOTES

1. LOADS MAY BE APPLIED TO THE SLAT BOTTOM CHORD MEMBERS ONLY. THE SUM OF THE LOADS COMING FROM EACH OF THE TRUSS POINTS TO EACH PANEL POINT ALONG THE BOTTOM CHORD SHALL NOT EXCEED THE SCHEDULED LOADS. TRUSSARY LOADS SHALL INCLUDE SELF WEIGHT.
2. MAXIMUM HORIZONTAL LOAD OF 1000 POUNDS MAY BE APPLIED ALONG THE BOTTOM CHORD AT 2'-0" DIA. THE MAXIMUM VERTICAL LOADS MAY OCCUR SIMULTANEOUSLY WITH THE SCHEDULED RIGGING LOADS AND SHALL BE CHECKED ON THE STRUCTURE.



**RIGGING LOAD LIMITS
AT THE FRONT CANTILEVER**



CEILING GRID FRAMING MAXIMUM LOAD NOTES

THESE ARE MAXIMUM PERMISSIBLE LOADS BY GRID. COORDINATE LOADS AS NOT TO EXCEED 1200 LB MAXIMUM LOAD.

IF TOTAL LOADS EXCEED MAXIMUM EACH MEMBER, COORDINATE LOADS AS NOT TO EXCEED MAXIMUM TRUSS LOAD.

THE TOTAL SUM OF ALL SUPPORTED LOADS SHALL NOT EXCEED 4000 POUNDS. THIS LIMIT INCLUDES ALL THE LOADS SUPPORTED FROM ALL BEAMS AND TRUSSES.

**RIGGING LOAD LIMITS
AT THE CEILING GRID**



This drawing and the ideas, specifications, and details incorporated within are the sole and exclusive property of the City of Bakersfield. This document has been prepared to describe proposed and/or new work and does not necessarily represent any as-built or existing conditions.

Drawn By:
illumination inc.

Scale: 0'-1"=10'-0"

Grid Load Limits

Last Updated: 07/07/06